



Fish Polyclonal Antibody

Catalog No	YP-Ab-03873
Isotype	IgG
Reactivity	Human;Mouse
Applications	IHC;IF;WB;ELISA
Gene Name	SH3PXD2A
Protein Name	SH3 and PX domain-containing protein 2A
Immunogen	Synthesized peptide derived from the N-terminal region of human Fish.
Specificity	Fish Polyclonal Antibody detects endogenous levels of Fish protein.
Formulation	Liquid in PBS containing 50% glycerol, 0.5% BSA and 0.02% sodium azide.
Source	Polyclonal, Rabbit,IgG
Purification	The antibody was affinity-purified from rabbit antiserum by affinity-chromatography using epitope-specific immunogen.
Dilution	IHC-p 1:100-500;IF/ICC 1:100-500;WB 1:500-2000;ELISA 1:5000-20000
Concentration	1 mg/ml
Purity	≥90%
Storage Stability	-20°C/1 year
Synonyms	SH3PXD2A; FISH; KIAA0418; SH3MD1; TKS5; SH3 and PX domain-containing protein 2A; Adapter protein TKS5; Five SH3 domain-containing protein; SH3 multiple domains protein 1; Tyrosine kinase substrate with five SH3 domains
Observed Band	
Cell Pathway	Cytoplasm. Cell projection, podosome. Cytoplasmic in normal cells and localizes to podosomes in SRC-transformed cells.
Tissue Specificity	Found in several cancer cell lines, particularly invasive breast carcinomas and melanomas.
Function	domain:The fifth SH3 domain mediates binding with ADAM12, ADAM15 and ADAM19.,domain:The PX domain is required for podosome localization, and for binding phosphatidylinositol 3-phosphate (PtdIns(3)P) and phosphatidylinositol 3,4-biphosphate (PtdIns(3,4)P2).,function:Required for podosome formation, degradation of the extracellular matrix, and for the invasiveness of some cancer cells. Binds phosphatidylinositol 3-phosphate (PtdIns(3)P) and phosphatidylinositol 3,4-biphosphate (PtdIns(3,4)P2). In association with ADAM12, mediates the neurotoxic effect of beta-amyloid peptide.,PTM:Tyrosine phosphorylated by SRC. Phosphorylation plays a regulatory role in the protein localization. The intramolecular interaction of the PX domain with the third SH3 domain maintains the protein in the cytoplasm and phosphorylation disrupts this interaction, resulting in the redistribution of the protein from cy



Background

domain:The fifth SH3 domain mediates binding with ADAM12, ADAM15 and ADAM19.,domain:The PX domain is required for podosome localization, and for binding phosphatidylinositol 3-phosphate (PtdIns(3)P) and phosphatidylinositol 3,4-biphosphate (PtdIns(3,4)P2).,function:Required for podosome formation, degradation of the extracellular matrix, and for the invasiveness of some cancer cells. Binds phosphatidylinositol 3-phosphate (PtdIns(3)P) and phosphatidylinositol 3,4-biphosphate (PtdIns(3,4)P2). In association with ADAM12, mediates the neurotoxic effect of beta-amyloid peptide.,PTM:Tyrosine phosphorylated by SRC. Phosphorylation plays a regulatory role in the protein localization. The intramolecular interaction of the PX domain with the third SH3 domain maintains the protein in the cytoplasm and phosphorylation disrupts this interaction, resulting in the redistribution of the protein from cytoplasm to the perimembrane region. Phosphorylated on serine upon DNA damage, probably by ATM or ATR.,similarity:Belongs to the SH3PXD2 family.,similarity:Contains 1 PX (phox homology) domain.,similarity:Contains 5 SH3 domains.,subcellular location:Cytoplasmic in normal cells and localizes to podosomes in SRC-transformed cells.,subunit:Interacts with ADAM12, ADAM15 and ADAM19.,tissue specificity:Found in several cancer cell lines, particularly invasive breast carcinomas and melanomas.,

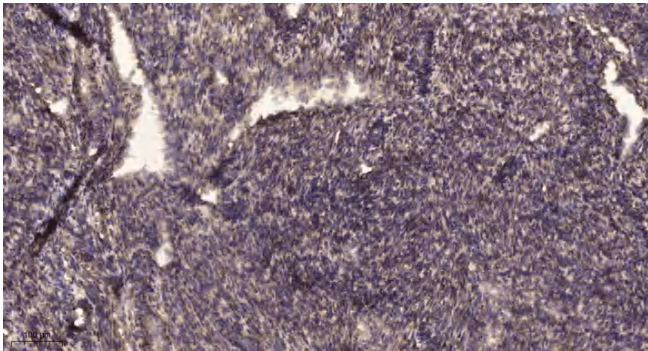
matters needing attention

Avoid repeated freezing and thawing!

Usage suggestions

This product can be used in immunological reaction related experiments. For more information, please consult technical personnel.

Products Images



Immunohistochemical analysis of paraffin-embedded human uterus. 1, Antibody was diluted at 1:200(4° overnight). 2, Tris-EDTA,pH9.0 was used for antigen retrieval. 3,Secondary antibody was diluted at 1:200(room temperature, 45min).